

The background of the slide features a faded image of a road sign and a forest. The sign is yellow with black text that reads "AVALANCHE AREA", "NEXT 1.5 MILES", and "DO NOT STOP". Below the sign, a green mile marker sign is visible, showing "MILE 4". The background also shows a dense forest of bare trees.

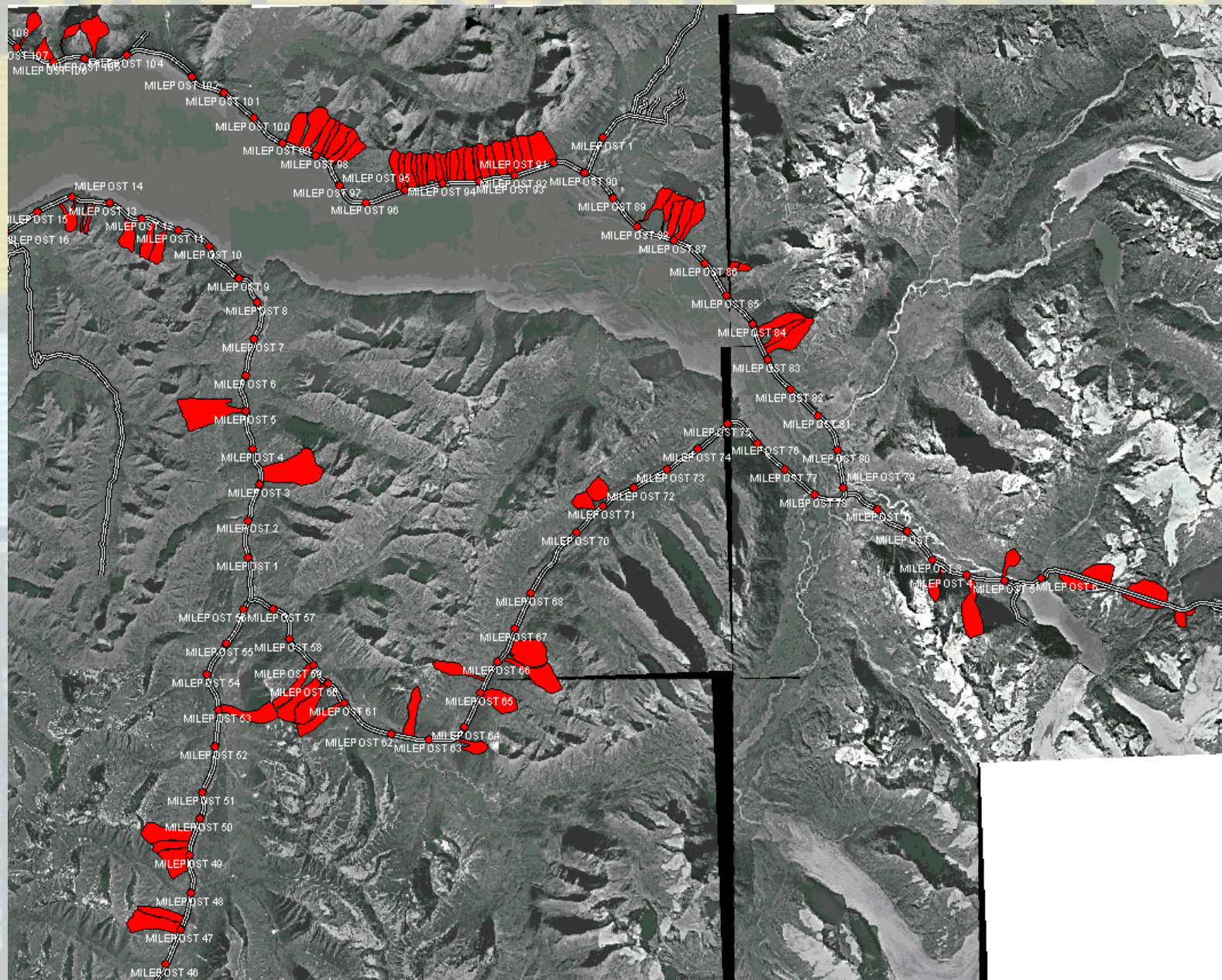
HISTORY OF SNOW AVALANCHE HAZARD REDUCTION ON THE SEWARD HIGHWAY

Matt Murphy

Alaska Department of Transportation and Public Facilities

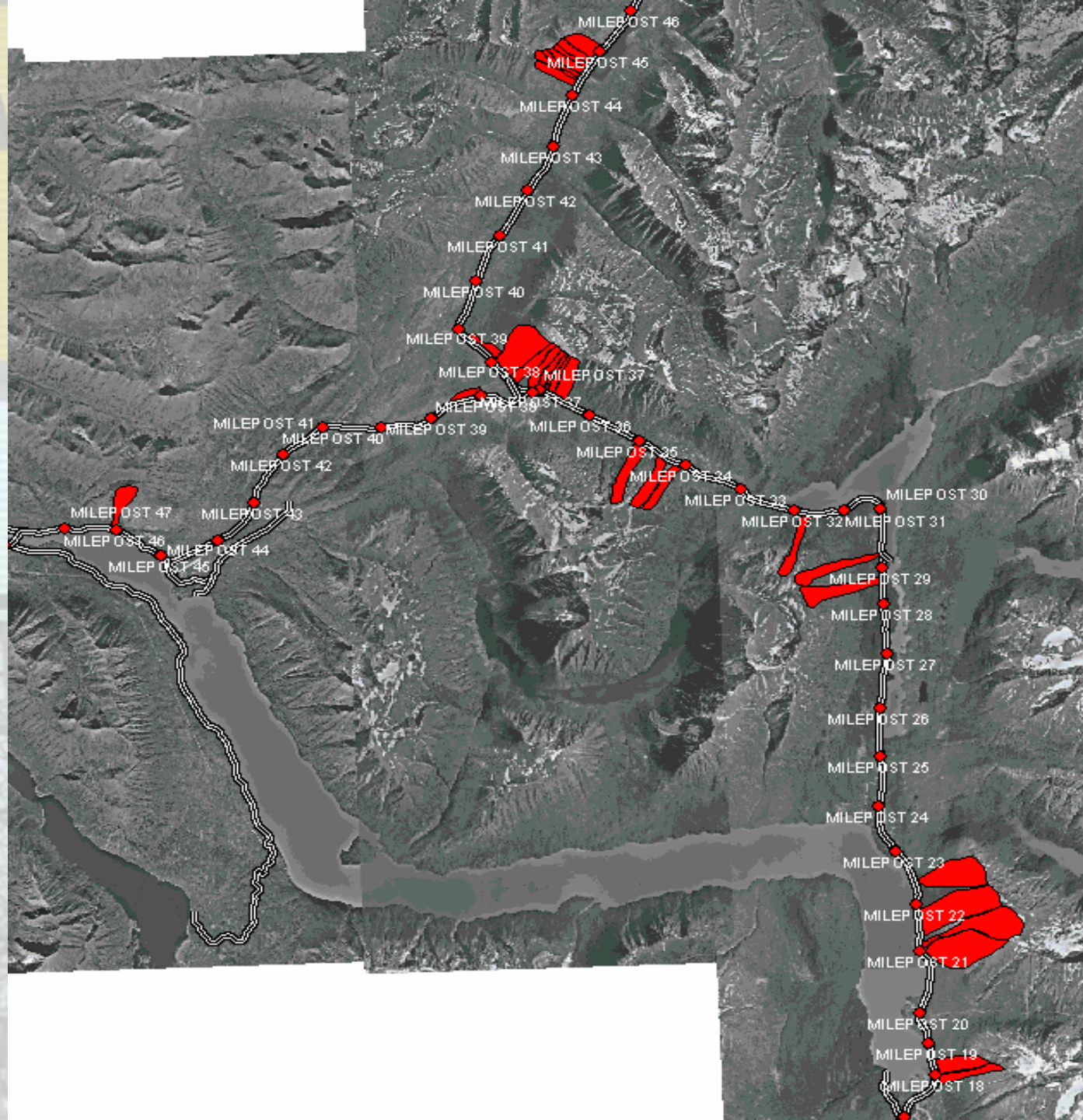
November 1, 2013













Railroad Avalanche Frequency 1917-1951 (*MP 91-100)



AVAL
NEX

DO

MIL
4



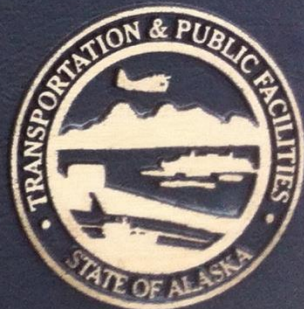
AREA
LES

TOP

MIL
4

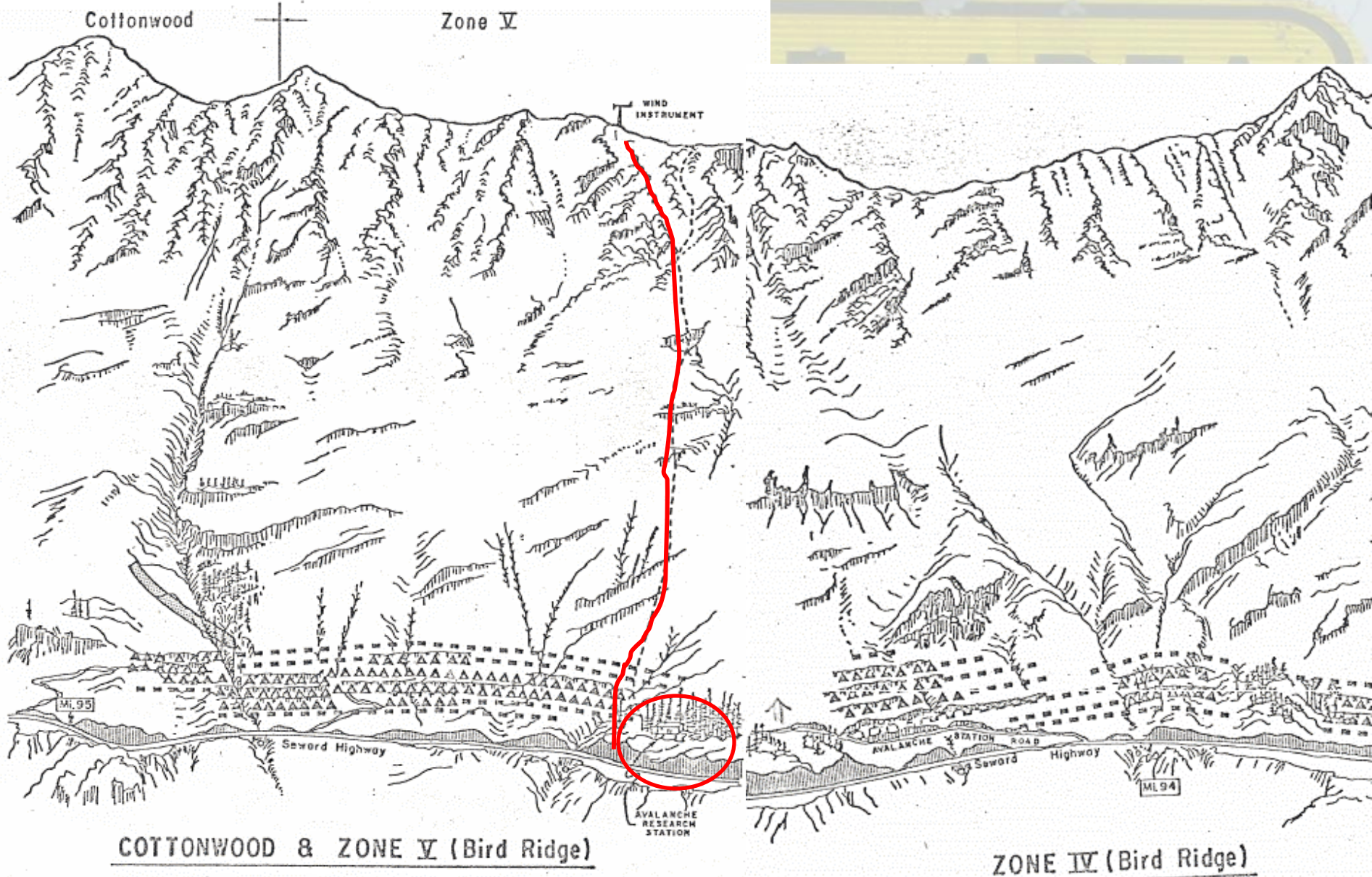
★ ★ In memory of
Kerry ★ Brookman

This monument is dedicated to Mr. Brookman and the men and women of the Alaska Railroad and Alaska Department of Transportation who work on the front line each winter keeping Alaska's railroad and highways safe for the traveling public. While working to clear two avalanches that had closed the railroad and highway east of this site, Mr. Brookman from the Alaska Railroad and two co-workers from the Department of Transportation were engulfed by a third avalanche. Mr. Brookman died on February 1, 2000 from injuries sustained in this tragic incident. His co-workers survived.



Seward Highway Avalanche Frequency 1952-2013





COTTONWOOD & ZONE V (Bird Ridge)

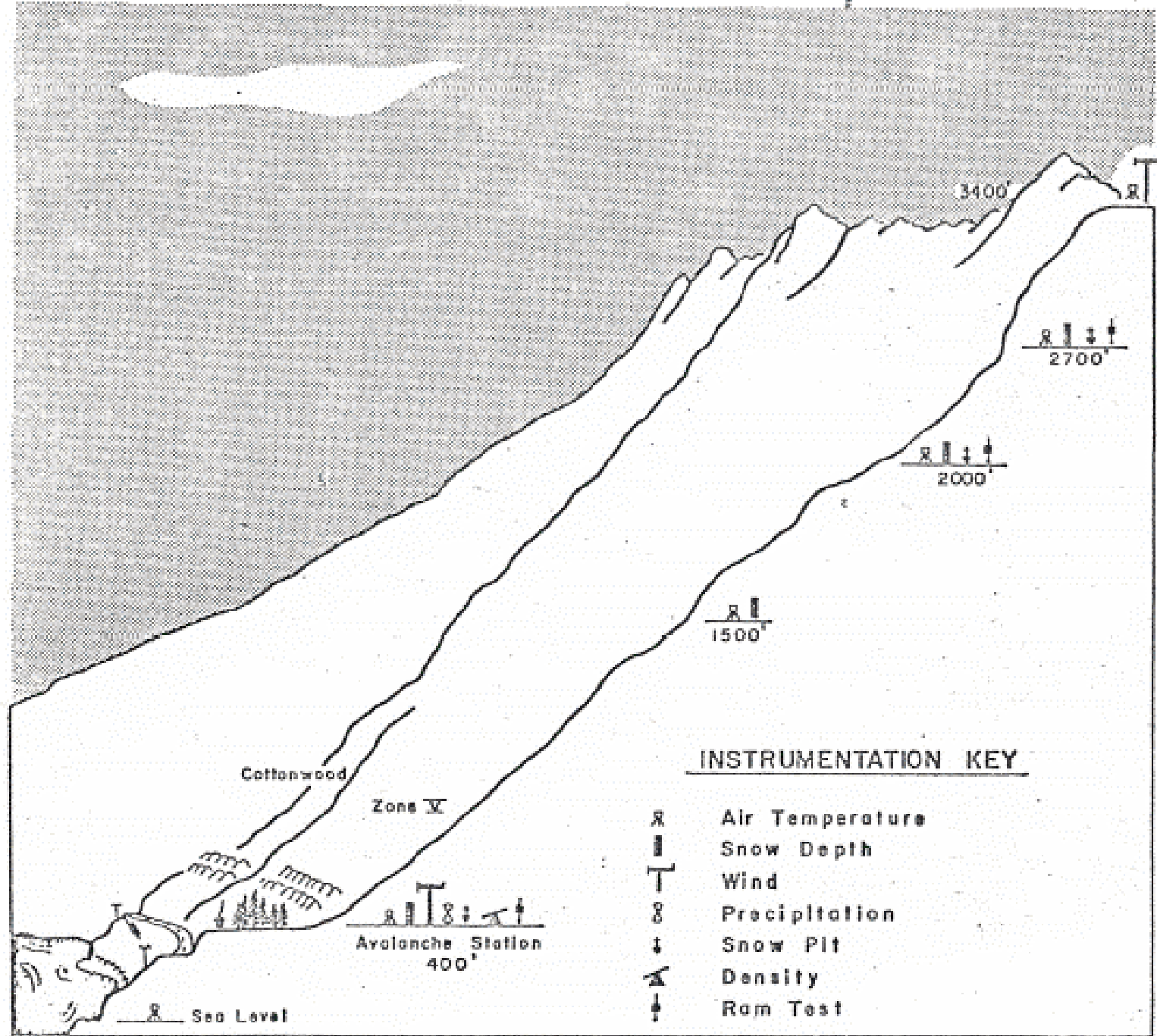
ZONE IV (Bird Ridge)

LEGEND:

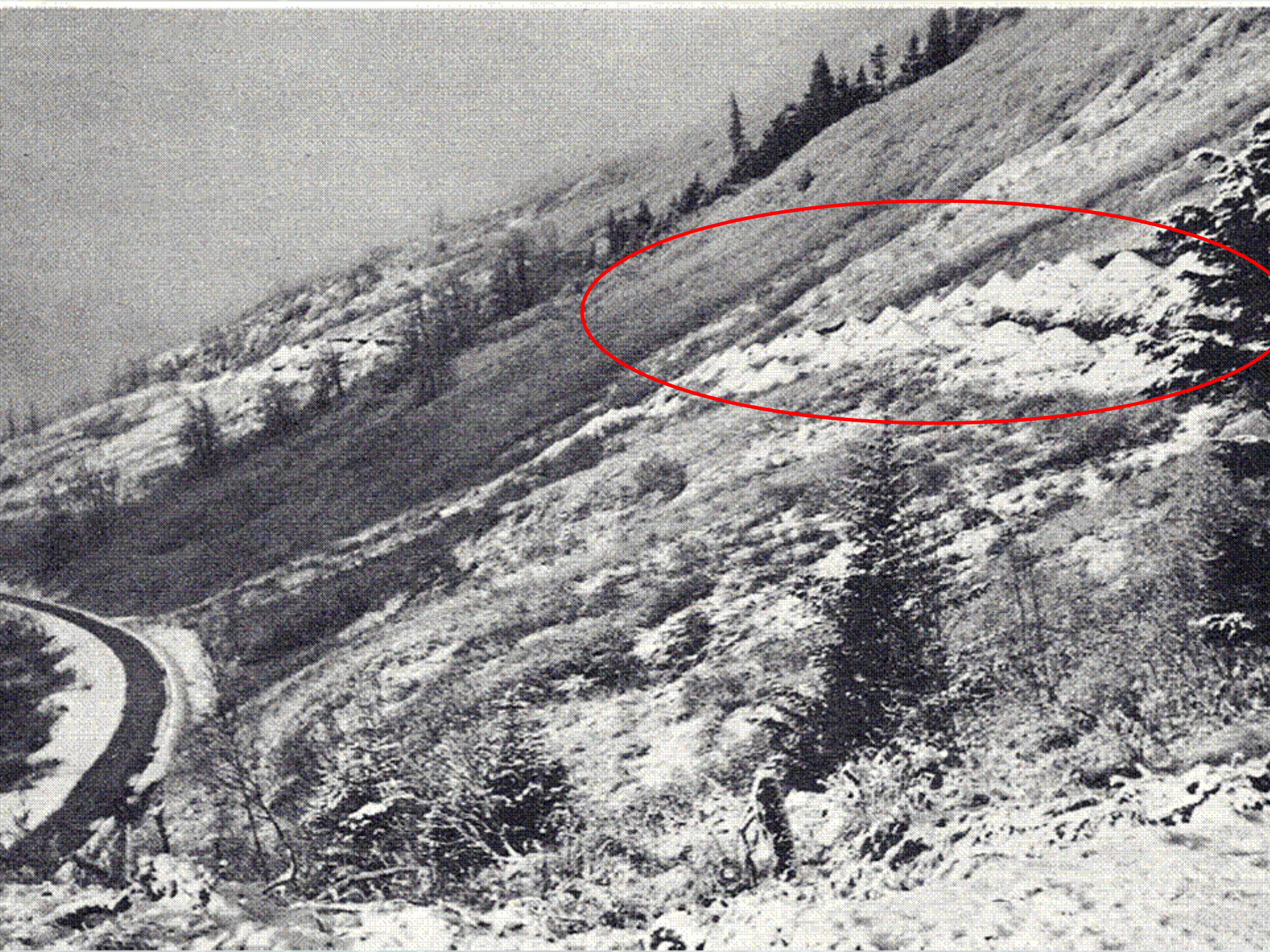
- Avalanche BarriersAAA
- Proposed Avalanche Barriers.....AAA
- Proposed Terrace=
- Proposed Diversion Dike=
- Instrument Cables---

LEGEND:

- Avalanche Barriers.....AAA
- Proposed Avalanche Barriers.....AAA
- Proposed Terrace.....=



PROFILE OF AVALANCHE SLOPE ABOVE DEVILS CLUB STATION



Devils Club
Avalanche Research Station



Bird to Gird Pathway

Seward Hwy

1

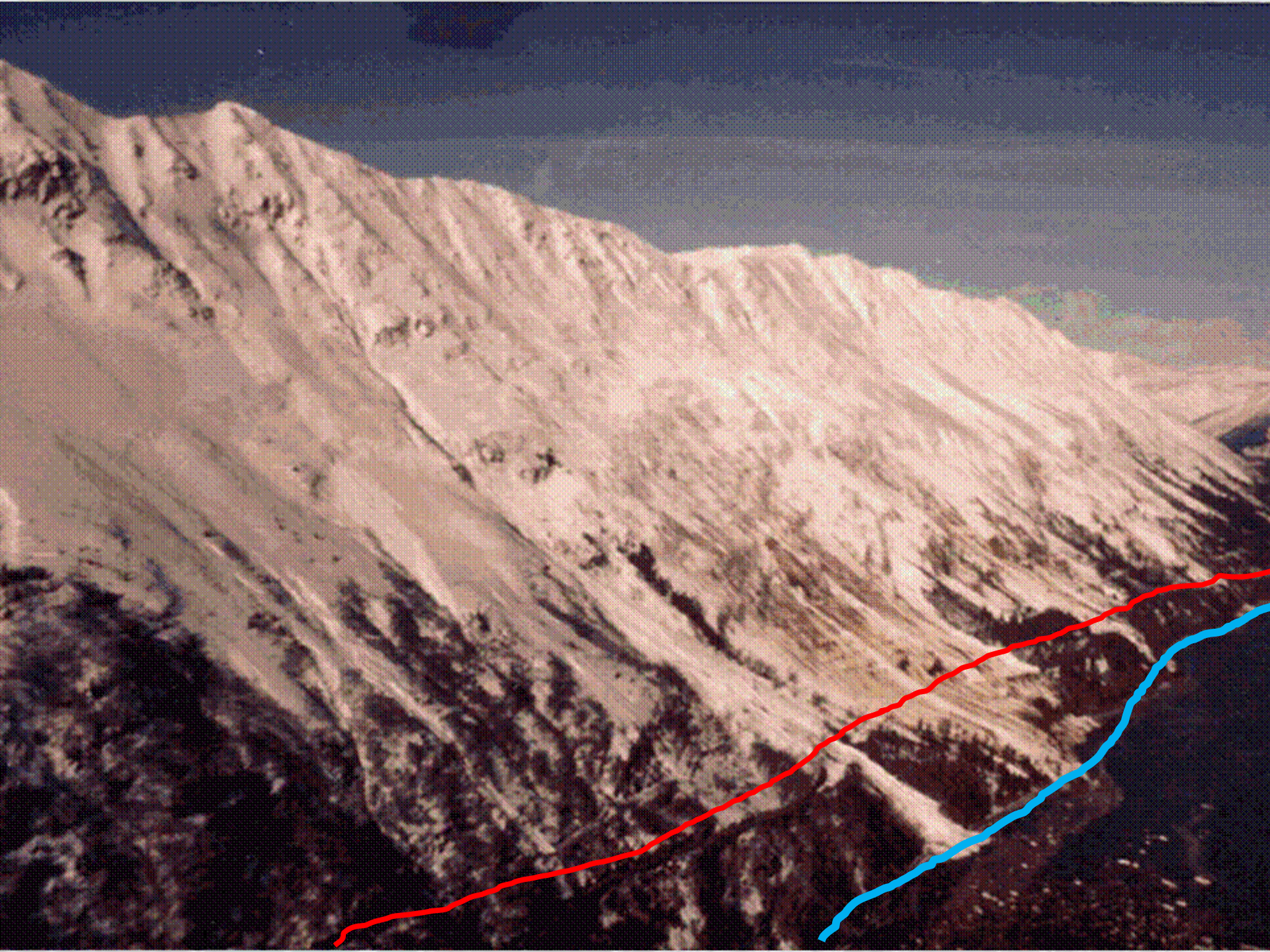














**AVALANCHE AREA
NEXT 1.5 MILES**

DO NOT STOP















KEEP
BACK
50^{FT.}







THANKS

AMSC, 2003. Avalanche Atlas. Report prepared by Alaska Mountain Safety Center, Inc for Chugach Electric Association; Anchorage, Alaska.

Bachman, Don, 1980. Personal letter.

Fredston, J. et al, 1985. Seward Highway Avalanche Project Data Base. Draft Report. Alaska Avalanche Forecast Center, Arctic Environmental Information and Data Center, University of Alaska Fairbanks. Prepared for SOA Department of Transportation and Public Facilities.

Hamre, D., 1979. Seward Highway Avalanche Safety Plan. Report prepared by Alcan Avalanche Services for the Alaska Department of Transportation and Public Facilities; Central Region, Maintenance& Operations and Graphics Section.

Mears, A. 2000. Avalanche Hazard Analysis, Seward Highway MP97-99 (Bird Flats). Prepared for the Alaska Department of Transportation and Public Facilities.

Mears, A., 1983. Snow Avalanche Hazard and Control Analysis-Seward Highway, Bird Creek to Girdwood Turnoff. Prepared for the Alaska Department of Transportation and Public Facilities.

Onslow, T., 2013. Personal communications.

**AVALANCHE AREA
NEXT 1.5 MILES**

DO NOT STOP

