

ISSW 2014

{ High lights
from Banff

Eeva Latosuo
SAAW2014



BANFF, CANADA

2014

www.issw2014.com



Oh, Canada...

⌘ Oral presentations:

- ⌘ Tim Glassett – Highway avalanche fatalities
- ⌘ Dave Hamre – Fracture speeds
- ⌘ Ron Simenhois – Fracture arrest at slab boundary
- ⌘ Emma Walker – Denali guide decisionmaking

⌘ Posters

- ⌘ Hannah Brewster – Storm statistics at CPG operations area
- ⌘ Mat Brunton – Front Range avalanche advisory program
- ⌘ Sarah Carter – Damalanche; Snowkiting ed
- ⌘ John Fitzgerald – January wet slab cycle
- ⌘ Brian Gehring – Risk tolerance in backcountry users
- ⌘ Bill Glude – AK Block finalized
- ⌘ Debra McGhan – Education games
- ⌘ Matt Murphy – Statistical tools for DOT avalanche program
- ⌘ Molly Schouweiler – Contaminant effects on avalanche dogs
- ⌘ Wendy Wagner – Travel advisory icons
- ⌘ Katreen Wikstroem-Jones – Entrainment at Bird Hill



Alaska represented well!

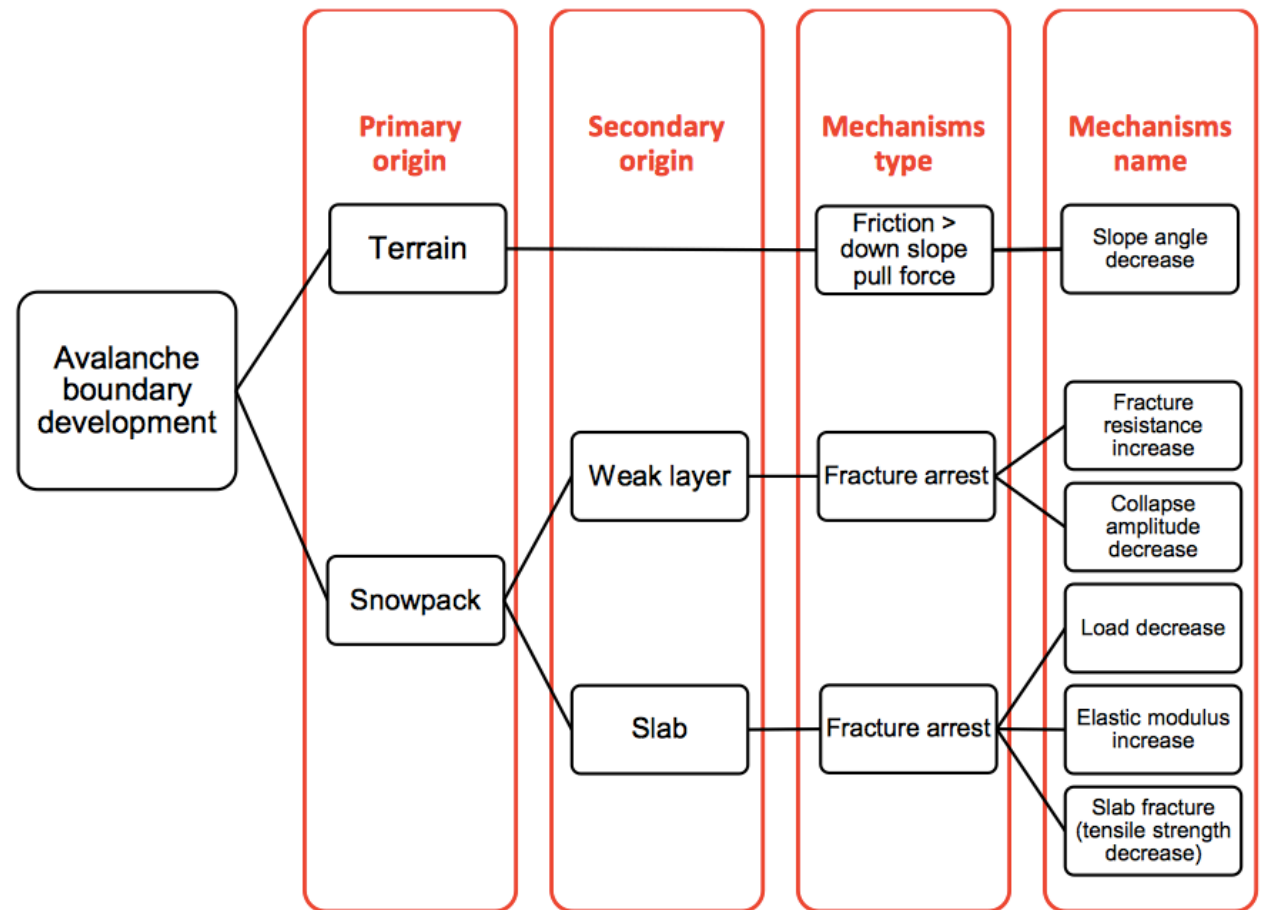


**UNCERTAINTY
AHEAD**

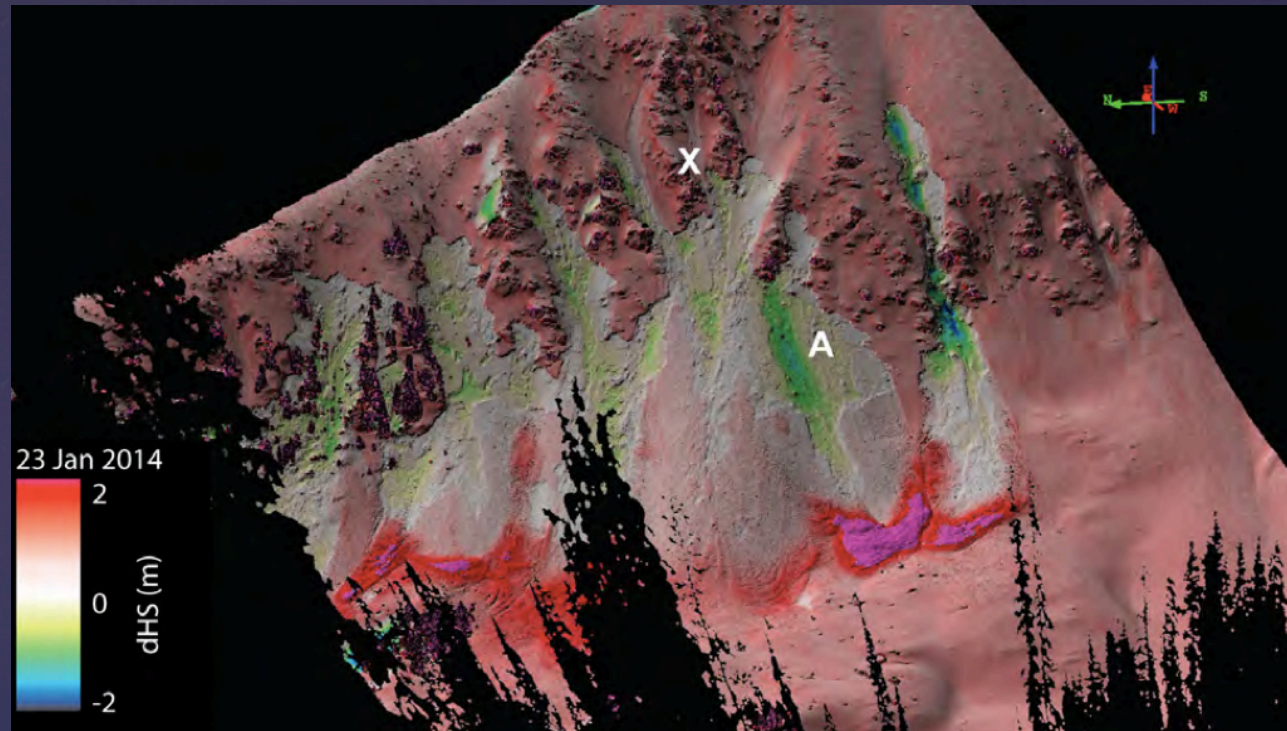
**Theme of the week:
Uncertainty**



Birkeland: Slab and weak
layer in fracture arrest
Explaining non-releases with weak
layer interruption and slab support



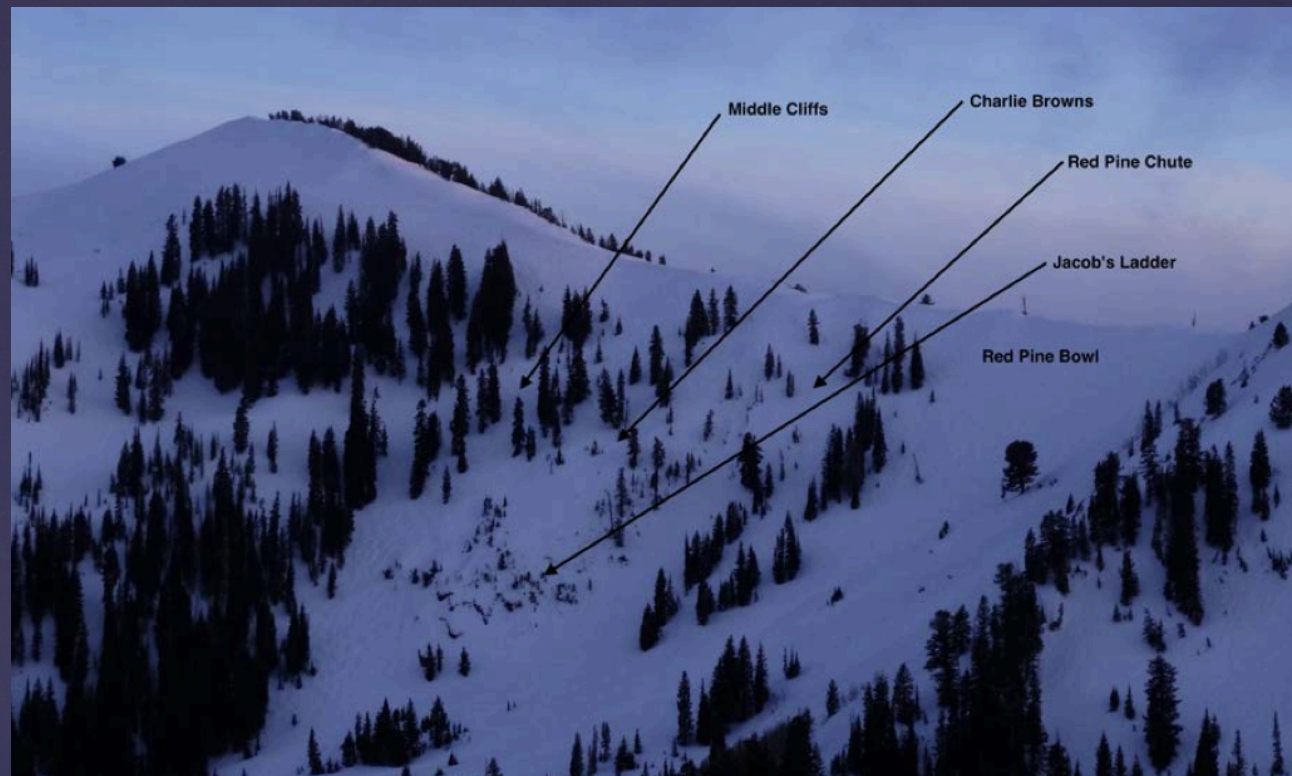
Simenhois: Fracture arrest at slab boundary
6 mechanisms of boundary development



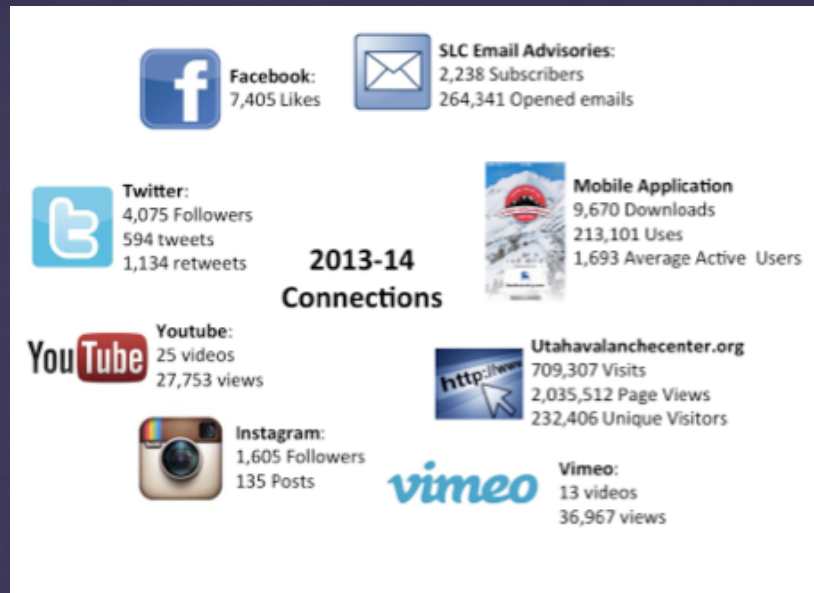
Deems: Terrestrial LiDAR
measuring snowdepth
Visual mapping of spatial
variability of snowpack depth



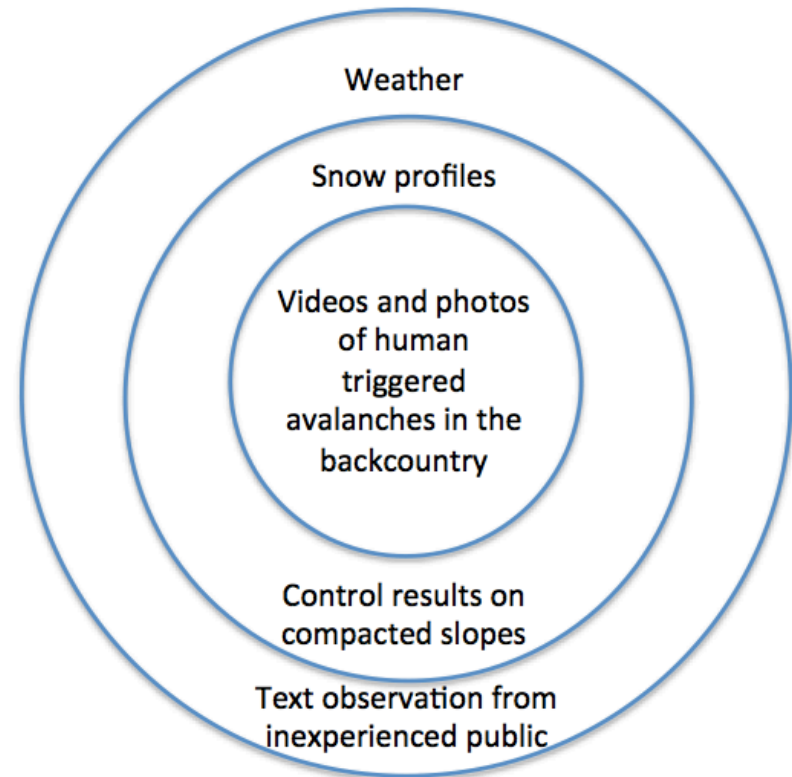
Baughner:
Crystal Mtn Deep Wet Slabs
“Perfect storm” & unusual snowpack
result in rapid onset and longer than
expected runout distances



Hutchinson: Legal process
Canyons inbound fatality
Lessons learned from the first jury
tried inbound fatality



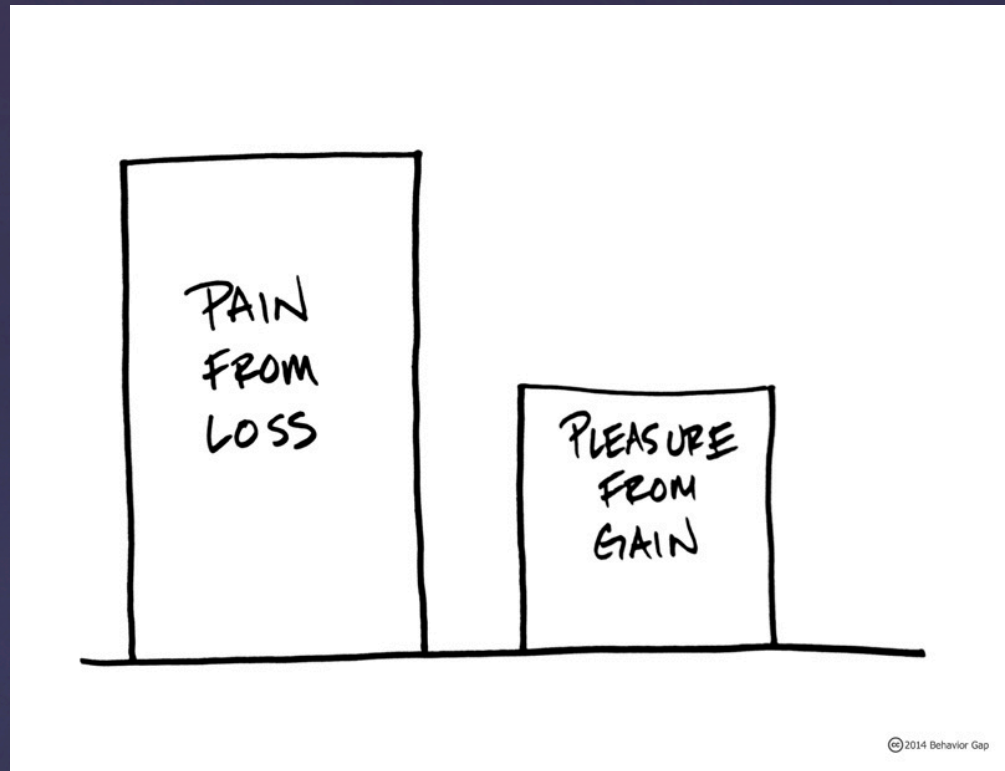
Bull's Eye Information



Tremper:
Crowdsourcing
in avalanche forecasting
Social media & Utah Avalanche Center



Savage: Prolongued
burials & avalanche rescue
Case study from the Sawtooths, ID



Geisler: Human factors & behavioral economics

Reframing risk to loss & Rewards of real-life practice

Excellent workshops

Avalanche safety for climbers?
What has avalanche research done
for us?
Does compaction work?
Certifications/Qualifications in
avalanche work?





Industry exhibits



Next stop:
ISSW 2016 Breckenridge
ISSW 2018 Innsbruck
New US-Canada-Europe rotation